



Portable Gas Leak Detector
SP-220 series
Data Logger Management Program
SW-SP-220
Operating Manual

RIKEN KEIKI Co.,Ltd.

2-7-6 Azusawa, Itabashi-ku, Tokyo, 174-8744, Japan

Phone : +81-3-3966-1113

Fax : +81-3-3558-9110

E-mail : intdept@rikenkeiki.co.jp

Web site : <http://www.rikenkeiki.co.jp/english/>

Contents

1. Preface	3
1-1. Purpose and features of this program	3
2. Installation and Uninstallation	5
2-1. Precautions on operating environment	5
2-2. Software installation	5
2-3. Installation procedure	6
2-4. Uninstallation	11
3. How to Operate	13
3-1. Download screen	13
3-2. Data screen	21
3-3. Data View screen	25
3-4. Set screen	31
4. Data Maintenance	36
4-1. Details of data storage structure	36
4-2. Backup	36
5. Operating Precautions	37
6. Troubleshooting	38
7. IrDA Specifications	39
7-1. About infrared communication	39
7-2. Display of communication ready status	39
7-2-1. Task bar icon when the operating system recognizes SP-220	39
7-2-2. Task bar icon when communication between the data logger program and the SP-220 main unit is in progress	40
8. File Structure	41
8-1. Installation folder	41
8-2. Working folder during execution	41
9. Software Specifications	42

1

Preface

The operation procedures and precautions mentioned in this operating manual apply only for the specified use of the program. We do not hold ourselves responsible for uses not described in this operating manual.

This operating manual will not explain the basic common operations of Microsoft Windows 7, Windows 8 and Windows 10, such as selecting commands or setting dialog boxes. First-time users of Windows should read the Windows manual or other documents in advance to learn common operations of the operating system.



WARNING

This product is distributed on a special type of CD called "CD-ROM". Do not try to play this CD on a common audio CD player. Ignoring this warning may cause loud noise, resulting in hearing impairment or speaker damage.



CAUTION

Necessity of pointing devices

This software requires pointing devices such as a mouse or touchpad. Keyboard-only operation is not supported.

1-1. Purpose and features of this program

This program is used to download data collected by the data logger function featured in SP-220 to a PC to use the data effectively.

There are the following advantages in downloading data collected by the data logger function:

- Gathered data can be viewed in a list.
- Gathered data can be viewed in a table format.
- Table data can be printed and stored on paper.
- Past data can be stored.
- Manual copying of data is no longer necessary.
- Able to manage more than one unit easily.

Notice

- Copying or duplicating the content of this manual without our knowledge, in whole or in part, is prohibited unless otherwise specified in law.
- Due to the improvement of the product, the content of this operating manual might be amended without prior notice.
- It is necessary to agree with the Software License Agreement, separately provided, before using this product. Please consent that we assume you have agreed to this agreement when the package is opened.
- Utilization of the software other than for intended purposes is prohibited. If the operating manual is ignored when using the software, or the software is altered in any way, the safety and quality of the product might not be maintained. We will not be liable for any accidents caused by these conditions.

(c) Copyright 2016 Riken Keiki co.,Ltd. All rights reserved.
The copyright of this software is owned by RIKEN KEIKI.

Microsoft Windows 7, Windows 8 and Windows 10 are registered trademarks of Microsoft Corporation in the United States and other countries.

2

Installation and Uninstallation

2-1. Precautions on operating environment

This program can be used on Microsoft operating systems Microsoft Windows 7, Windows 8 and Windows 10. Please note that it cannot be used on other operating systems.

This program requires a maximum of 40 MB hard disk when it is installed. Moreover, on operation of the system, it requires hard disk capacity depending on the amount of data. Please use the program with sufficient disk capacity.



CAUTION

Precautions on handling the CD-ROM

1. CD-ROM storage
Do not store the CD-ROM in a place exposed to direct sunlight or a place with high temperature and humidity.
2. CD-ROM drive to use
Avoid using a slot-loading CD-ROM drive.
The label attached on the CD-ROM might prevent CD-ROM from ejecting properly.
Use a tray-type CD-ROM drive.

2-2. Software installation

Insert a disk which stores data of the program to a CD-ROM drive of a Windows-based PC. After a while, an installation screen will automatically start.

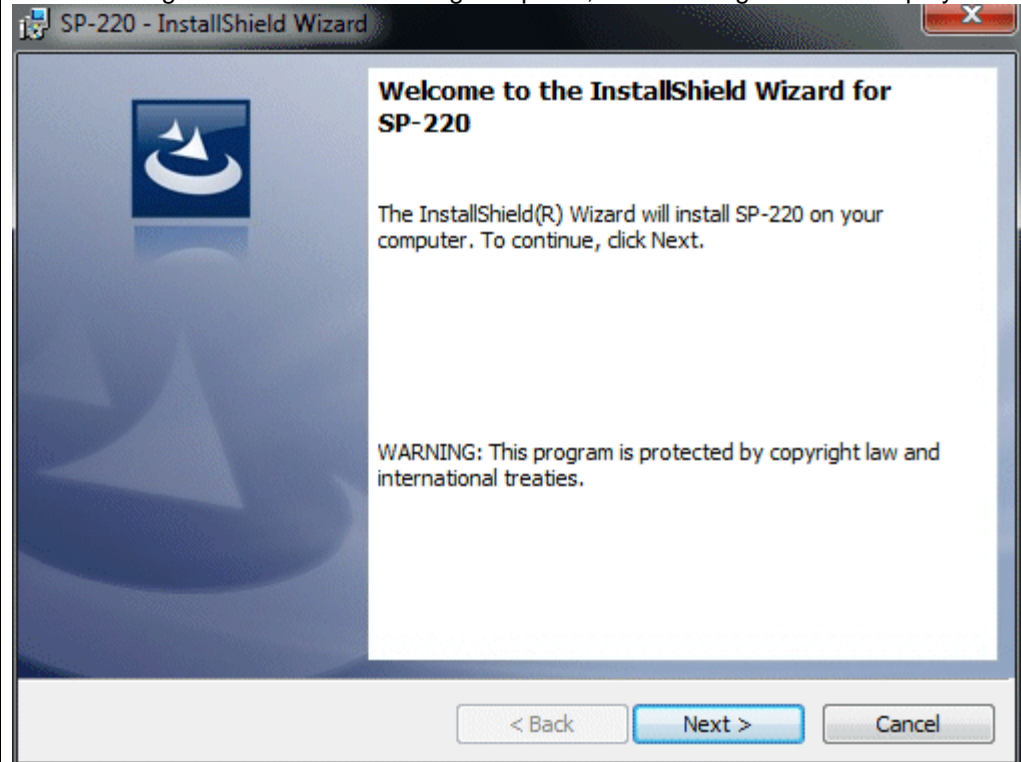
When the PC does not support the auto-start function of the CD-ROM, operate as follows:

1. From Explorer, open the CD-ROM drive.
2. Double-click the "setup.exe" file.

2-3. Installation procedure

- Start the setup program

After inserting the CD-ROM or starting setup.exe, the following screen is displayed.



Click the "Next" button.

- Accept the license agreement

The following screen is displayed.



Click the "Next" button to continue the installation, or the "Cancel" button to abort the installation.

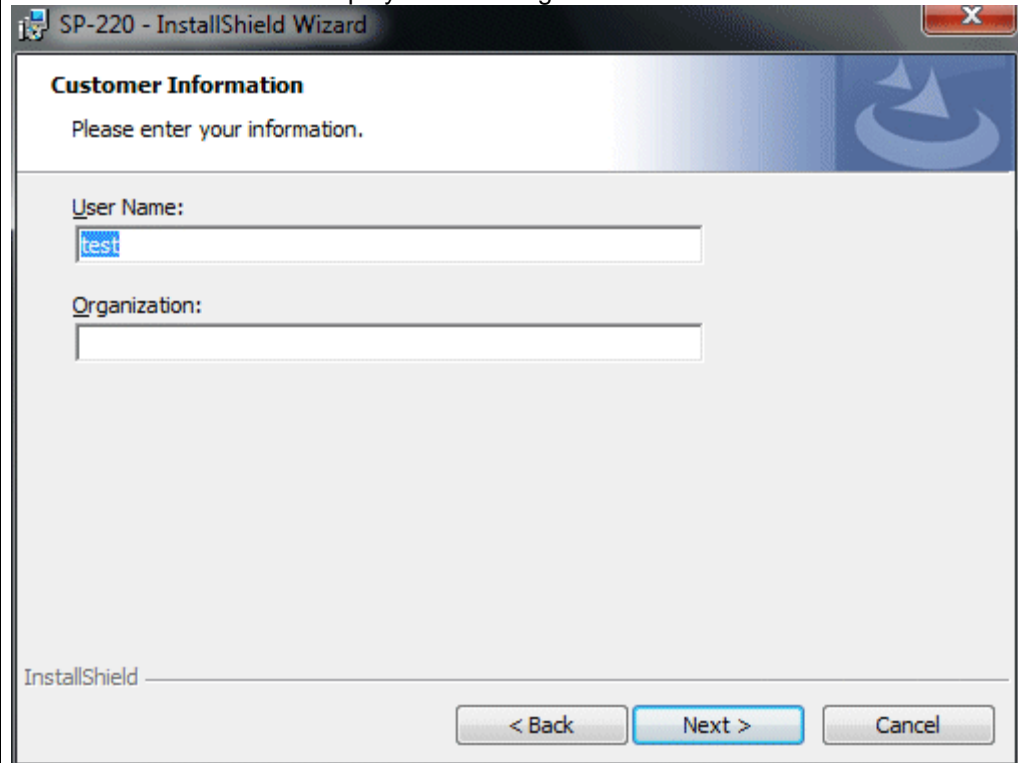


CAUTION

Fully understand the license agreement before continuing with the installation of the software.

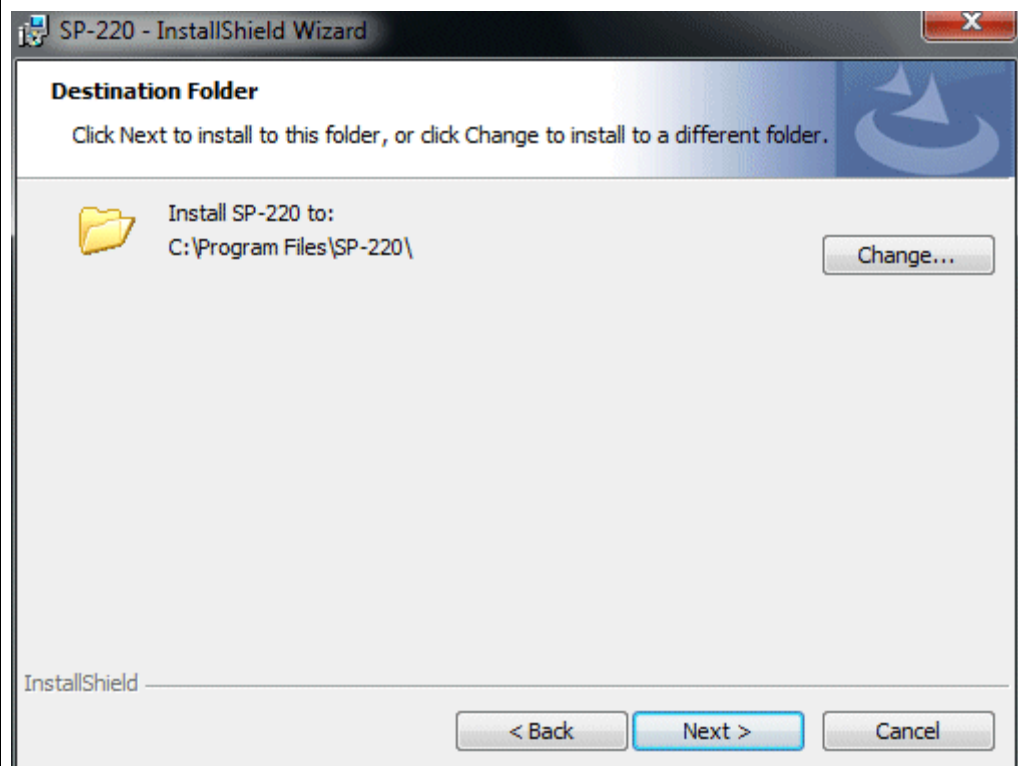
- **Customer Information**

Click the "Next" button to display the following screen.



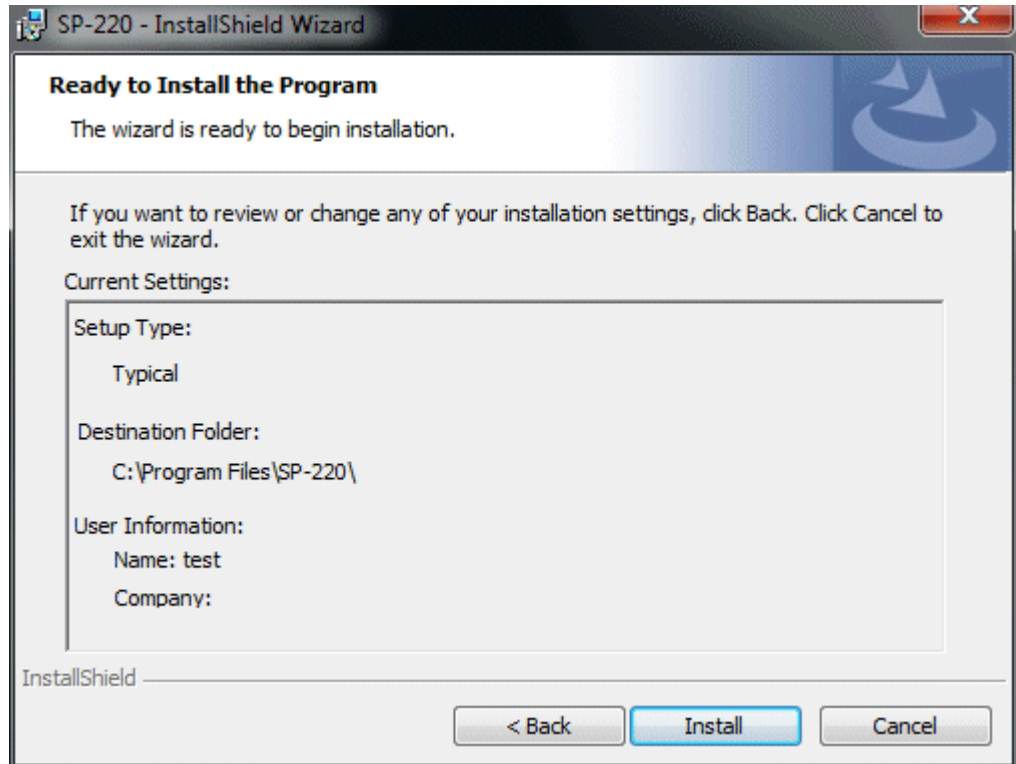
Click the "Next" button.

- **Destination Folder**



Click the "Next" button.

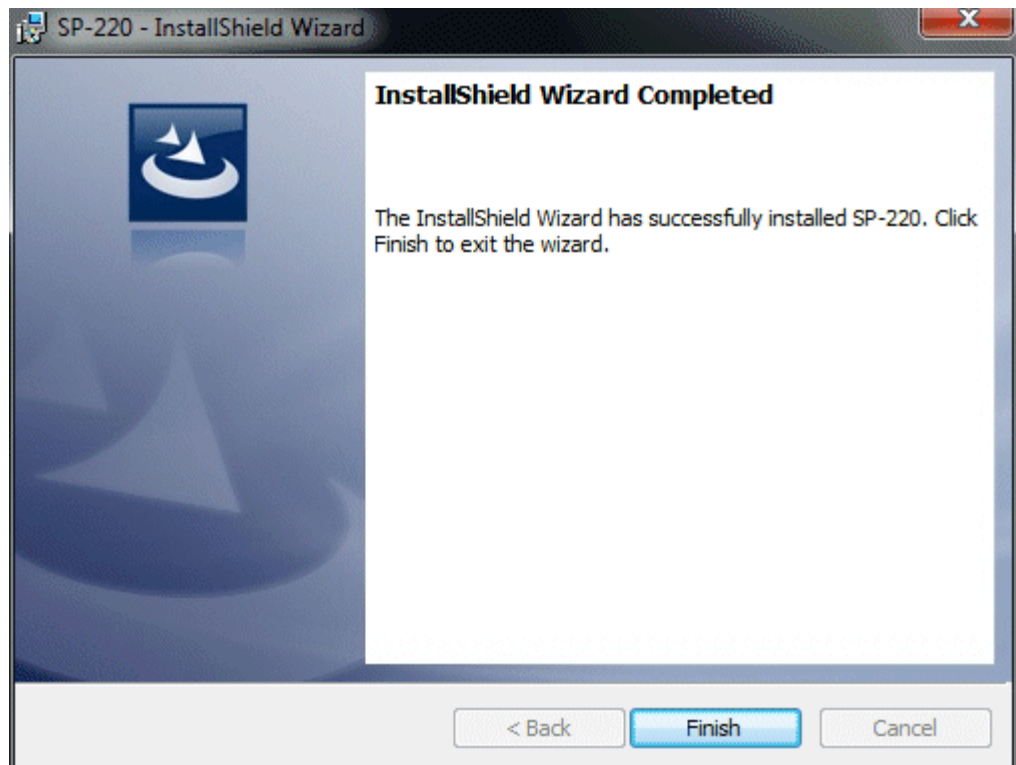
- **Start setup**



Click the "Install" button to start installation.

- **Complete**

When the setup process is completed, the following screen is displayed.



The program can be used immediately after setup.



CAUTION

Save past data for reinstallation

Please note the following when reinstalling the software:

1. Uninstall the software before reinstallation.
2. If the software is uninstalled after some operation, some files will remain on the PC. Of these files, SP220.mdb is a database file. If past data needs to be saved, copy this file to a different location, and then delete the folder.



CAUTION

Precautions when installing

This software requires a library, which consists of files such as various drivers, installed on the Windows system. The files are installed automatically during the installation of the software.

Installation of the system library requires administrator privileges.

In this case, follow the instructions to log in as an administrator, and then install the system library.

After installation, a dialog prompts to restart the system. Restart, log on again as a general user, and install the application.

(Both the library and the application are installed by clicking setup.exe in the CD-ROM. Installation with an administrator privilege is required only when the required library is not installed in the system folder.)



CAUTION

When using the software under a network-connected environment

When installing on a network-connected PC, check the following points.

IrDA communication utilizes a subset of TCP/IP technology (the communication technology used for the Internet, etc.) and uses a special set of communication groups and IP addresses.

Because of this, some strong Internet security software might reject communication.

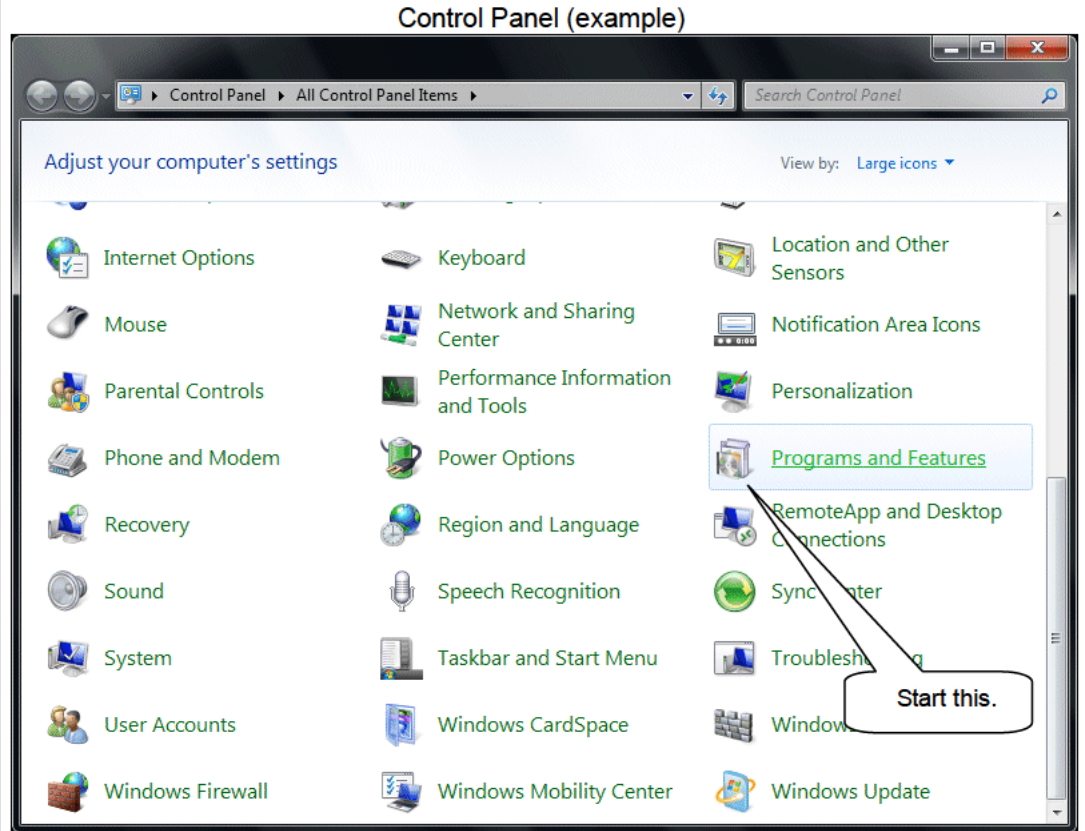
If possible, use a computer that is not connected to the network.

When using a computer connected to the network, use with sufficient considerations on security settings.

2-4. Uninstallation

- **Startup**

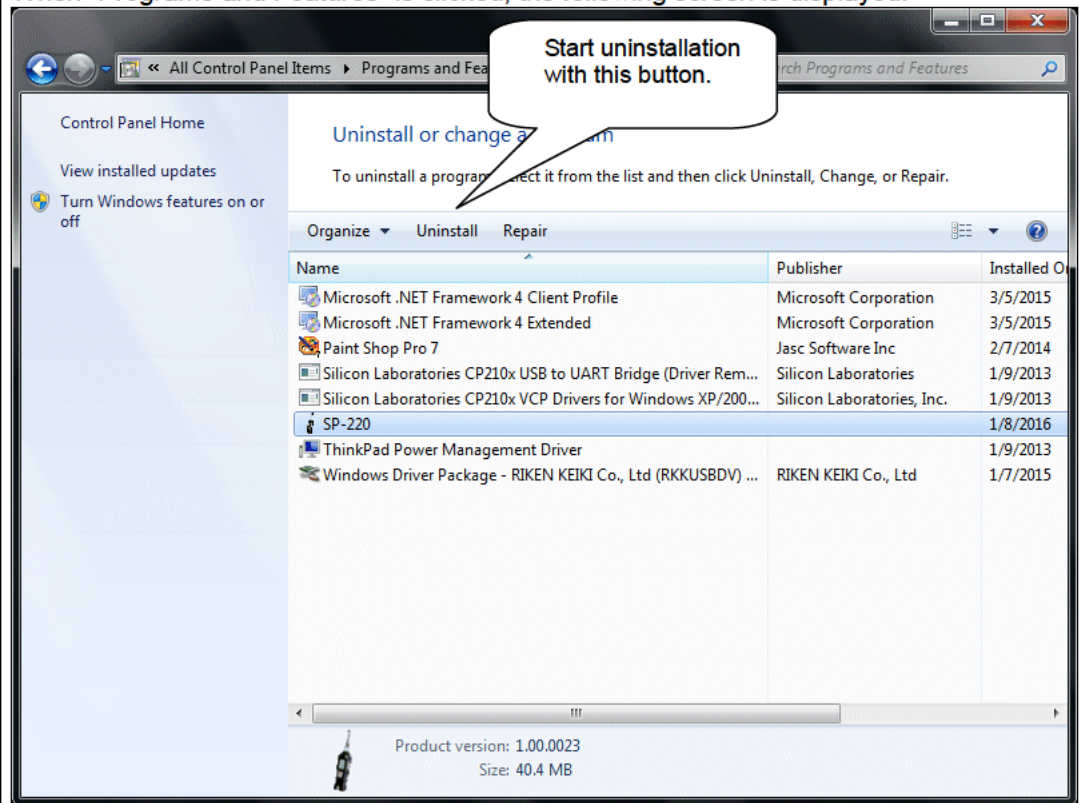
To uninstall the software, from the Start menu of the Windows bar, click "Control Panel" to start Control Panel.



From the Control Panel, click "Programs and Features" to start.

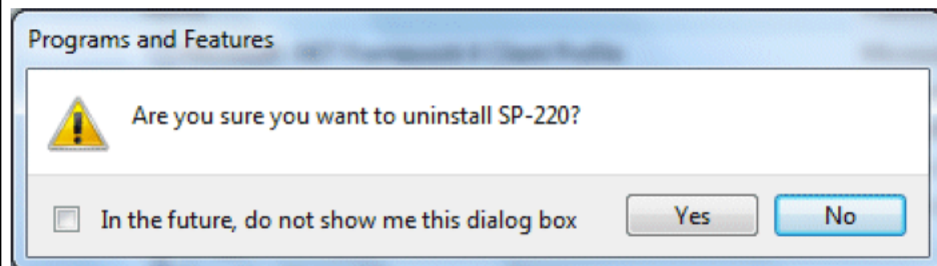
- **Select SP-220**

When "Programs and Features" is clicked, the following screen is displayed.




- **Start deletion**

Select "SP-220" and click the "Uninstall" button.



Click "Yes" to start the uninstallation.

 **CAUTION**
A message, "Do you want to remove the shared file?" might be displayed during uninstallation. Select "No to All". Selecting "Yes to All" might affect other applications.

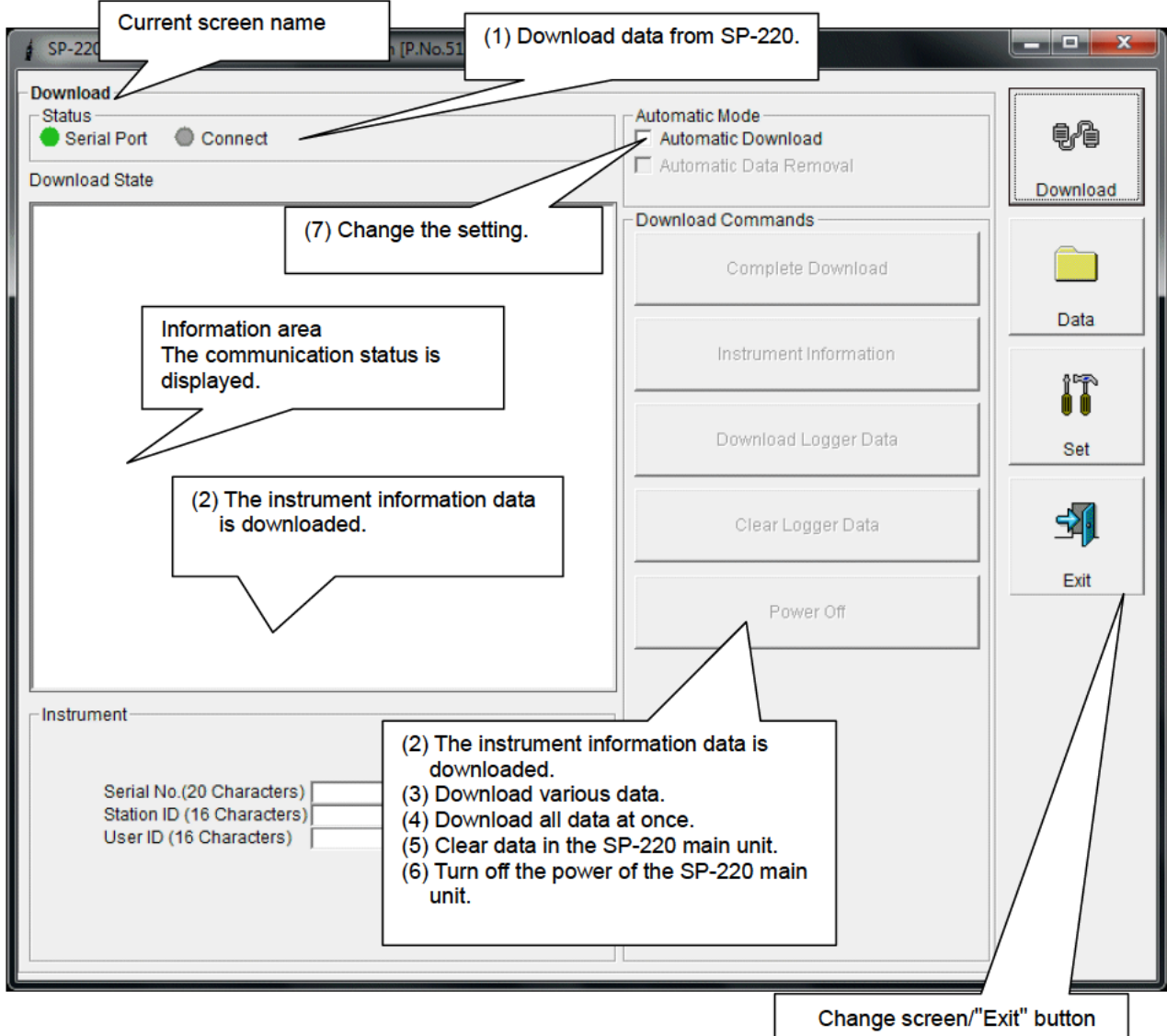
3

How to Operate

Double-click the SP-220 desktop shortcut, or click the "Start Menu", select "Programs" and click the SP-220 program icon.

3-1. Download screen

After the splash screen, the download screen is displayed.



To perform data communication, place the SP-220 main unit to an appropriate position, and with the program activated, turn on the power of the main unit. The program automatically judges whether or not communication is possible. If possible, the PC will be ready to receive the data.

(1) Download data from SP-220

• Prepare the main unit

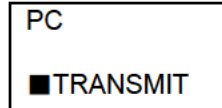
1. Start the software.
2. With the SP-220 main unit powered off, move it to a position capable of communication.
3. Turn on the SP-220 main unit.



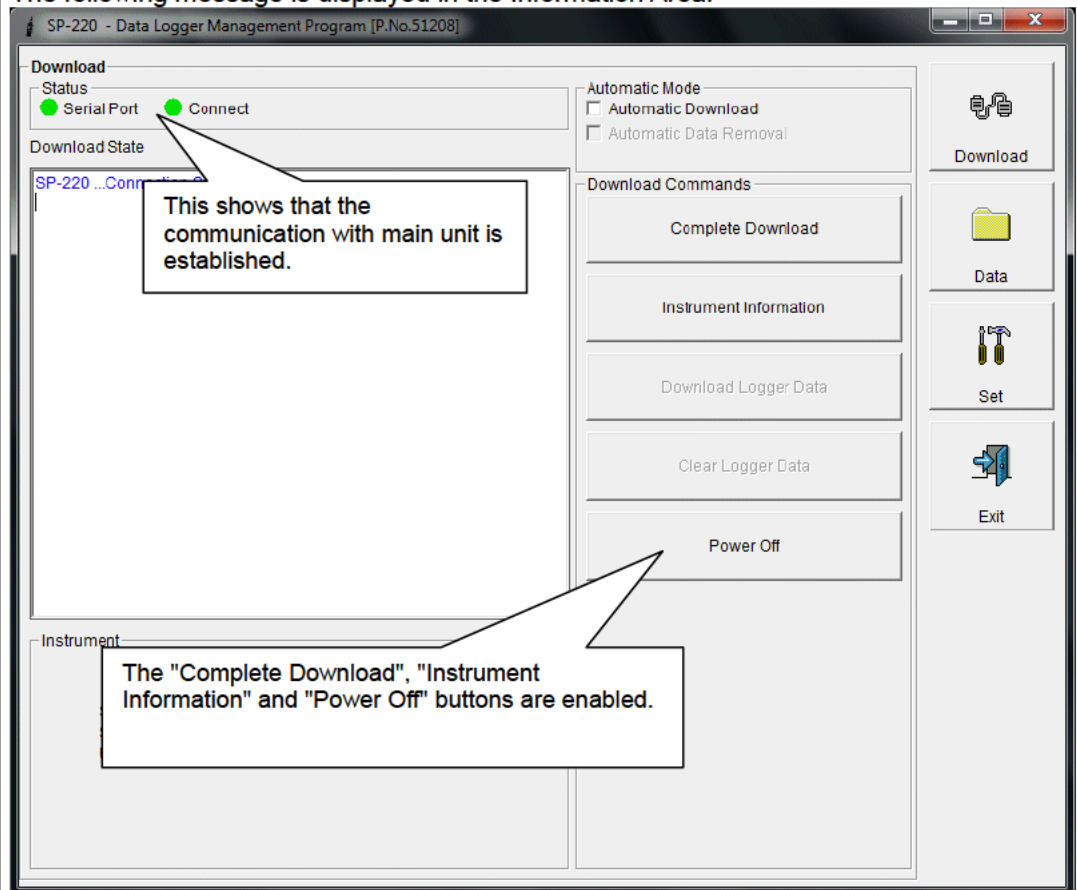
CAUTION

Make sure to turn on the power of SP-220 after placing it to a position capable of communication.
Communication will not be established when it is placed at a position capable of communication with the power turned on.

The message will be displayed as shown on the right on the LCD screen of the SP-220 main unit. →
(Due to the display resolution of SP-220, the message will be somewhat difficult to read.)



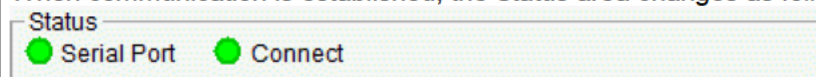
The following message is displayed in the Information Area.



CAUTION

If the content of the Information Area is different from above, turn off the power of the SP-220 main unit, check the position of the unit or others, and then turn on the power again.

When communication is established, the Status area changes as follows.



Serial Port:

Communication available: Green (PC port ready)

Communication not available: Red

Connect:

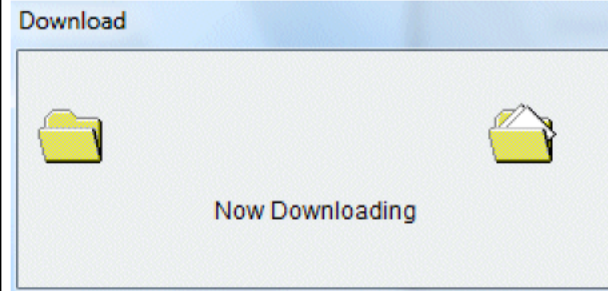
Communication ready: Gray

Communication in progress: Green

(2) Download instrument information

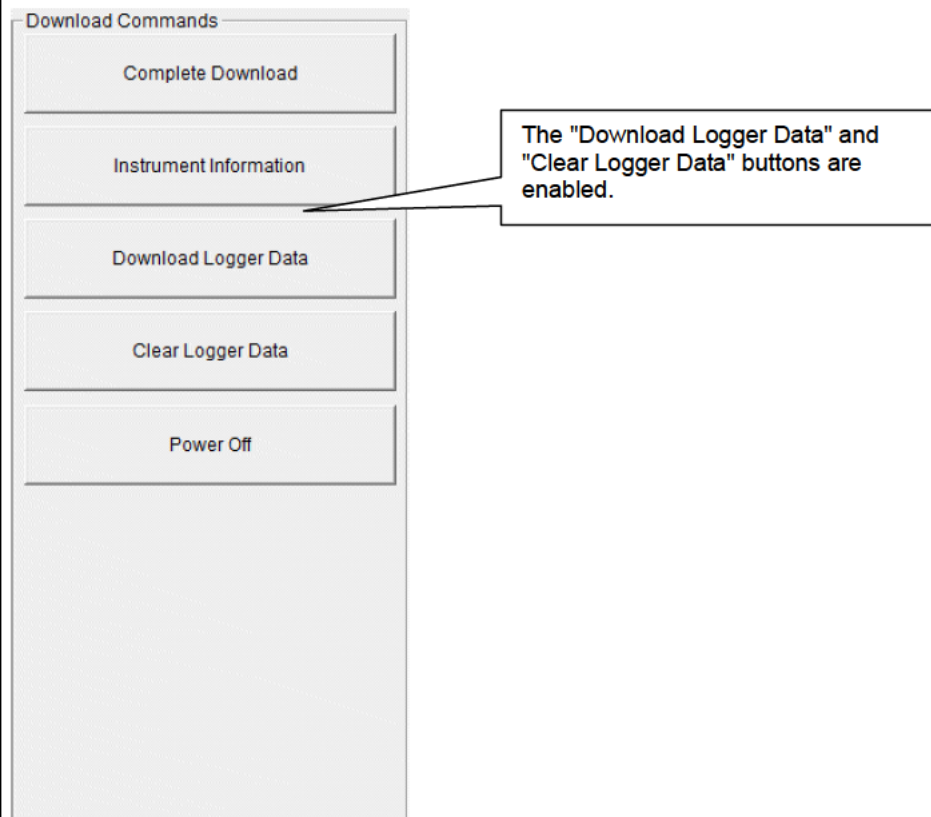
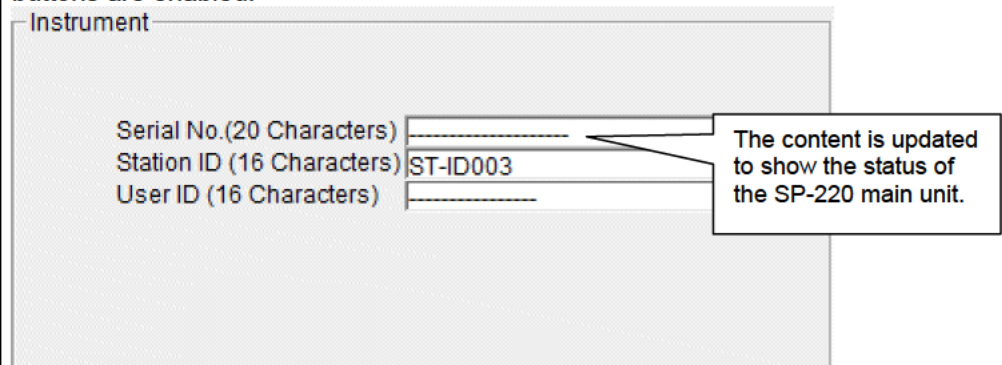
- **Download instrument information**

First, click the "Instrument Information" button to download instrument information data.



An animation is displayed during download.

When the Instrument Information data is downloaded, the content of the Instrument Information area is updated and the "Download Logger Data" and "Clear Logger Data" buttons are enabled.

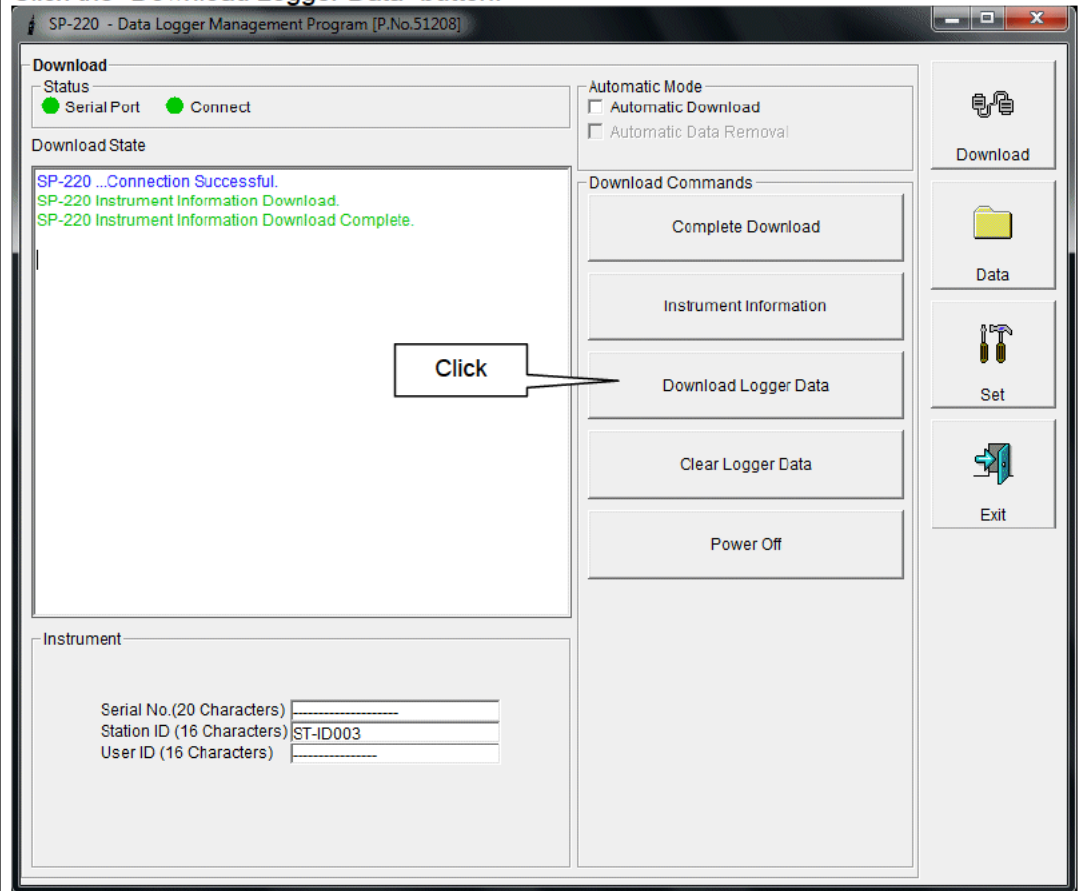


(3) Download various data


- **Measurement data**
- **Event data**

After the instrument information data is downloaded using the "Instrument Information" button, the "Download Logger Data" button is enabled.

Click the "Download Logger Data" button.



The download status is displayed in the information area.

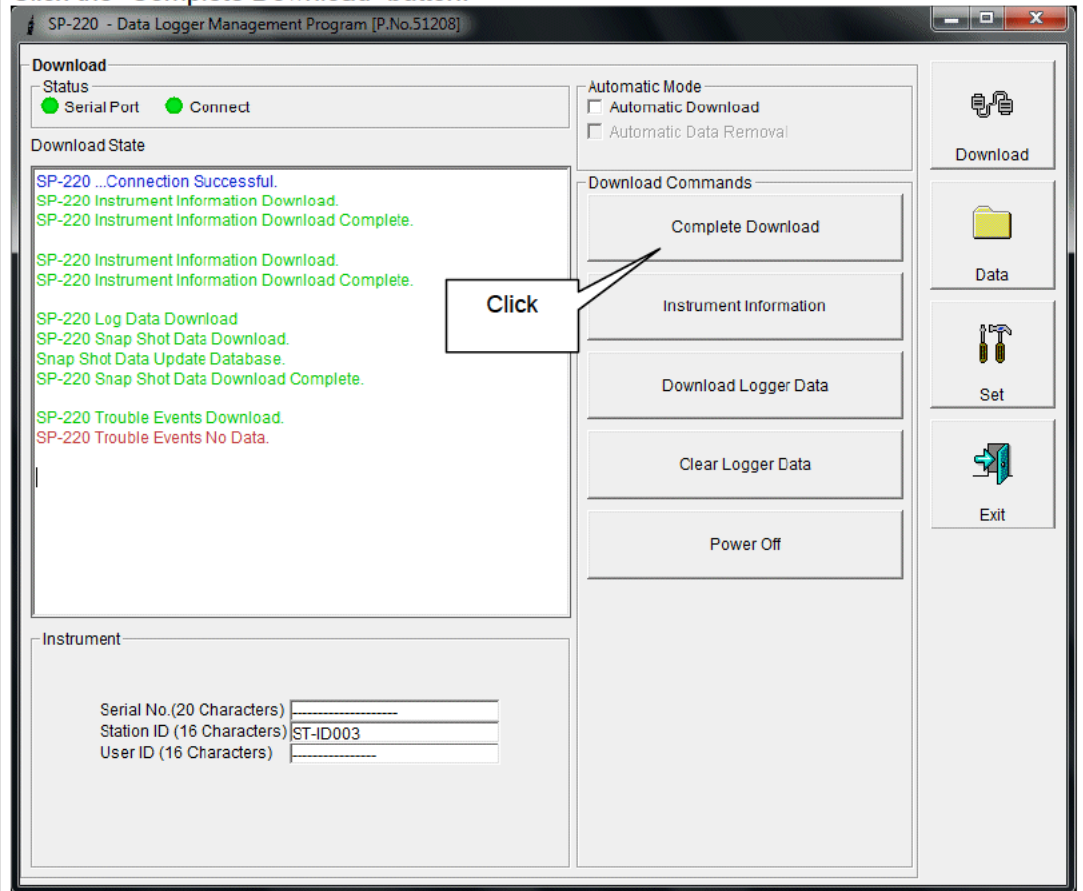
 **CAUTION**
During download of each data, other data accesses are prohibited. Therefore, other download buttons and the "Set" button are disabled.

(4) Complete download

- **Complete download**

The "Complete Download" button downloads Instrument Information, Trouble Events and Power Events data at once.

Click the "Complete Download" button.



The download status is displayed in the information area.



CAUTION

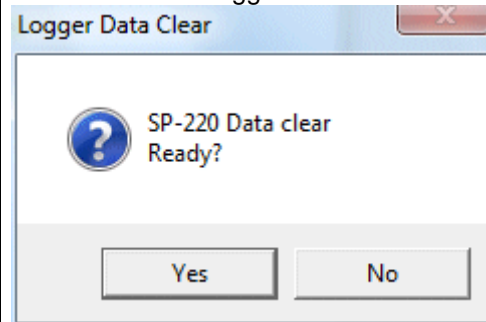
During download of each data, other data accesses are prohibited. Therefore, other download buttons and the "Set" button are disabled.

(5) Clear data in the SP-220 main unit

- **Data clear**

Use the "Clear Logger Data" button to delete various data stored inside SP-220.

Click the "Clear Logger Data" button.



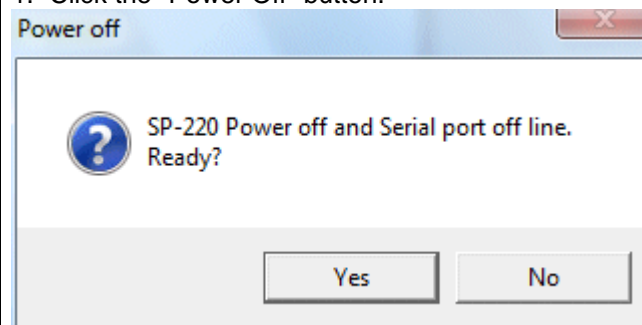
Click "Yes" to start clearing the data.

(6) Turn off the power of the SP-220 main unit

- **Power OFF**

Use the "Power Off" button to turn off the power of the SP-220 main unit and initialize the serial port of the PC.

1. Click the "Power Off" button.

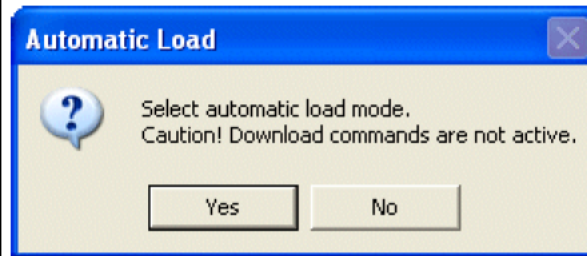
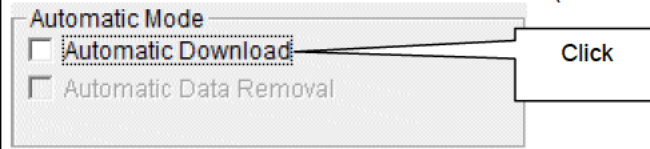


Click the "Yes" button to start the power off process of the SP-220 main unit. After the serial port of the PC is initialized, it will be reset to the data download ready status.

(7) Switch to automatic mode

- **Automatic Download**

1. Mark the "Automatic Download" checkbox (if not marked yet).



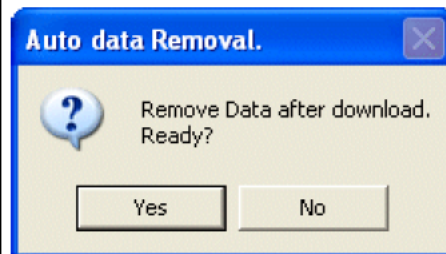
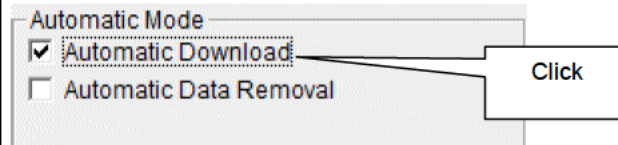
Click "Yes" to switch to "Automatic Download".
Click "No" to cancel mode change.

In this mode, after the SP-220 main unit is powered on, the PC automatically downloads complete data and then turns off the power of the SP-220 main unit. During automatic download, manual download is not available.

When "Automatic Download" is used, downloaded data can be automatically removed after download.

- **Automatic Data Removal**

1. Mark the "Automatic Data Removal" checkbox.

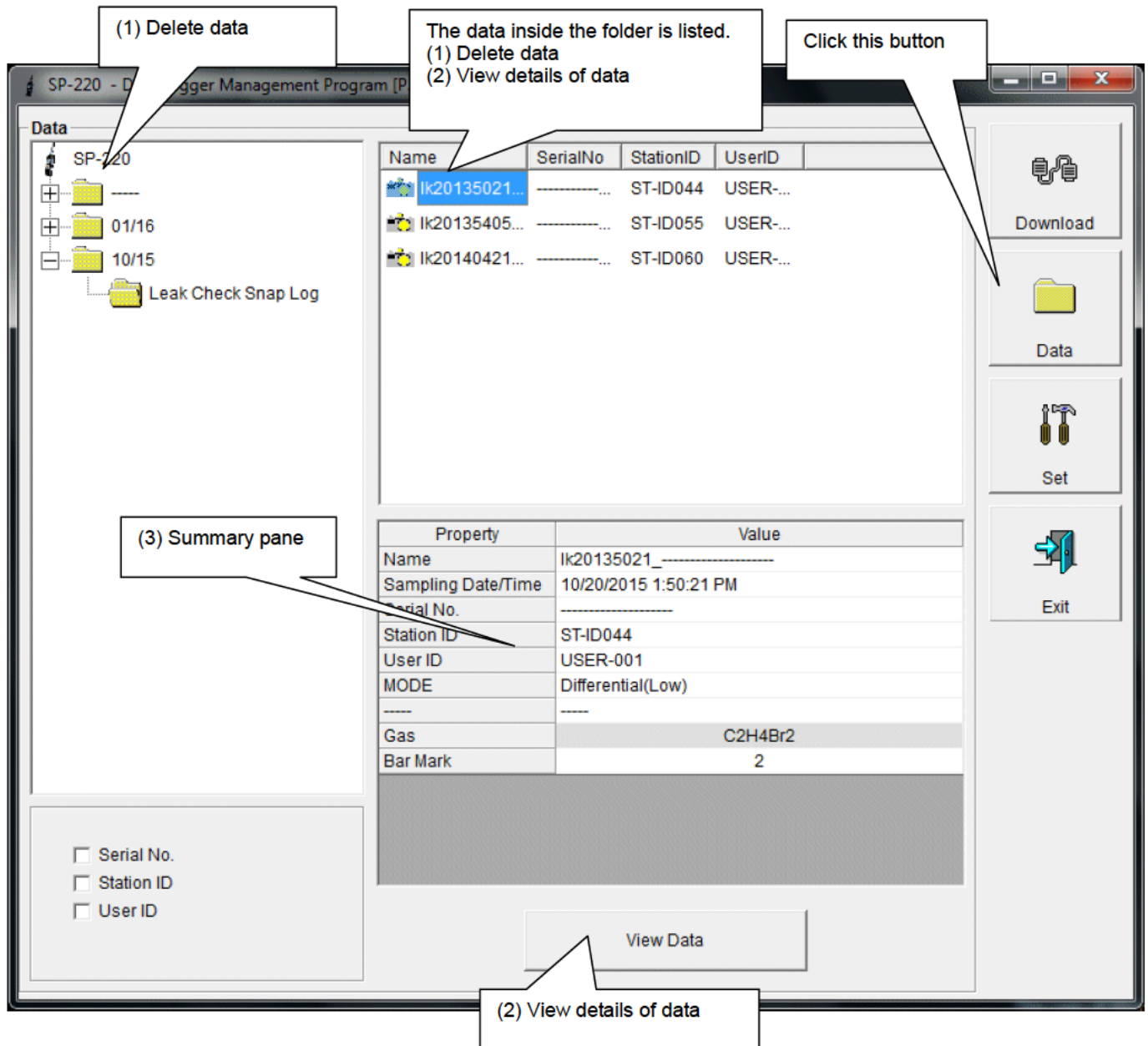


Click "Yes" to **automatically remove data stored in SP-220 after downloading complete data.**

* This setting is useful for shortening download time when repeating download and data removal processes.

3-2. Data screen

Click the "Data" button at the right side of the screen to switch to the following screen and view the list of downloaded data.



The operation of this screen is similar to the Windows Explorer. However, the following operations are not supported.

1. Rename data.
2. Move the data to another location.

Folders are displayed in an Explorer-like manner, with serial numbers, station IDs and User IDs displayed hierarchically in this order.

Folders and data names are formed under the following rules.

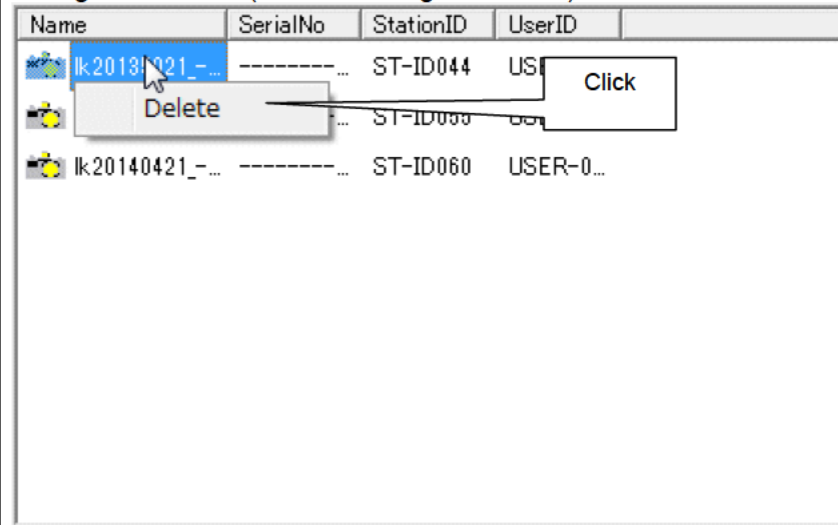
Folder name: 10/15 = Data of October 2015.

File name: Ik20135021_SERIALNO = Snap log, 20th day, 13:50:21 (Snap log recorded date/time)

The limit of data items to be stored in each folder depends on the memory limit of the PC. However, to maintain response speed, back up data files at least once a year. See "4. Data Maintenance".

- (1) Delete data
 - Delete

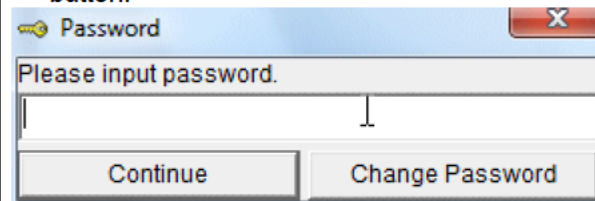
1. Click to select the data or folder to delete.
2. Right-click there (without moving the mouse).



The Delete menu is displayed. Click "Delete".

- Input password

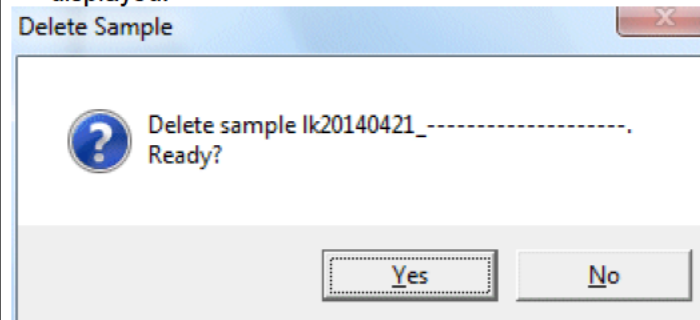
1. The Password dialog is prompted. Enter the password and press the "Continue" button.



CAUTION

When "Continue" is pressed without entering the password, the delete operation is canceled.

2. When "Continue" is pressed with an appropriate password, the following message is displayed.



Click the "Yes" button to delete the data.
Click the "No" button to cancel deletion of data.

(2) View details of data

- **View data details**

1. Click the data to be viewed in detail. Check that the summary of the data is displayed in the summary pane, and click the "View Data" button.

or

2. Double-click the data to be viewed in detail.

For details on how to use the data details screen, see "**3-4. Data View screen**".

(3) Summary pane

- **Details**

When the selected data is a normal data, the summary of the data is displayed.

Leak check snap log

Property	Value
Name	Ik20135021_-----
Sampling Date/Time	10/20/2015 1:50:21 PM
Serial No.	-----
Station ID	ST-ID044
User ID	USER-001
MODE	Differential(Low)
----	----
Gas	C2H4Br2
Bar Mark	2

Name : Data name
 Sampling Date/Time : Recorded date/time
 Serial No./Station ID/User ID : Status of the SP-220 main unit
 MODE : Measuring mode
 Gas : Gas
 Bar Mark : Number of bar marks when recording gas

Trouble events

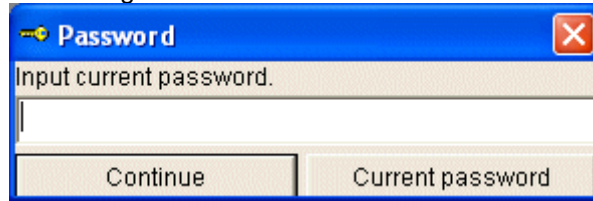
DateTime	Gas/Body	Event
10/19/2015 4:41:07 PI	Body	Fail(FLOW)
10/19/2015 4:41:05 PI	Body	Fail(ALK.)

DateTime : Date and time when the event occurred
 Gas/Body : Naturally occurring or produced gas, or the SP-220 main unit (Body)
 Event : Event type

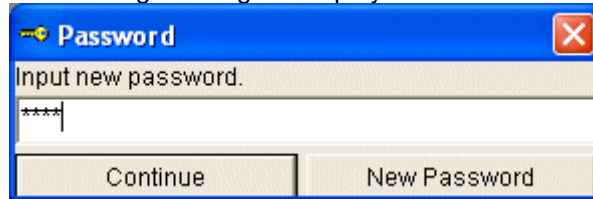
(4) Change password

• **Input password**

1. Display the Password dialog in the same way as deleting the data, and click "Change Password".



2. Enter an appropriate password and click the "Current Password" button. The following message is displayed.



3. Enter the new password and click the "New Password" button.

4. The Password dialog is prompted again. Enter the same new password and click "New Password".



Click "OK" to update the password.



CAUTION

The password immediately after installation is "Riken". (Case-sensitive)

3-3. Data View screen

(1) View in a table

This screen displays the details of each data in a table.

Output to a printer

Save to a file

To view data summary simultaneously

SP-220 - Data Logger Management Program [P.No.5]

Data View(Leak Check Snap Log)

Table Graph Event Only Condensed

Print Export Summary Return

No	User ID	Station ID	Gas	Date/Time	Bar Mark	MODE
1	USER-001	ST-ID044	C2H4Br2	10/20/2015 1:50:21 PM		erential(Lc
2	USER-001	ST-ID044	C2H4Br2	10/20/2015 1:50:25 PM		erential(Lc
3	USER-001	ST-ID044	C2H4Br2	10/20/2015 1:50:28 PM		erential(Lc
4	USER-001	ST-ID044	C2H4Br2	10/20/2015 1:50:38 PM		erential(Lc
5	USER-001	ST-ID044	C2H4Br2	10/20/2015 1:50:46 PM		erential(Lc
6	USER-001	ST-ID044	C2H4Br2	10/20/2015 1:50:53 PM		erential(Lc
7	USER-001	ST-ID044	C2H4Br2	10/20/2015 1:51:04 PM		erential(Lc
8	USER-001	ST-ID044	C2H4Br2	10/20/2015 1:51:12 PM		erential(Lc

Download

Data

Set

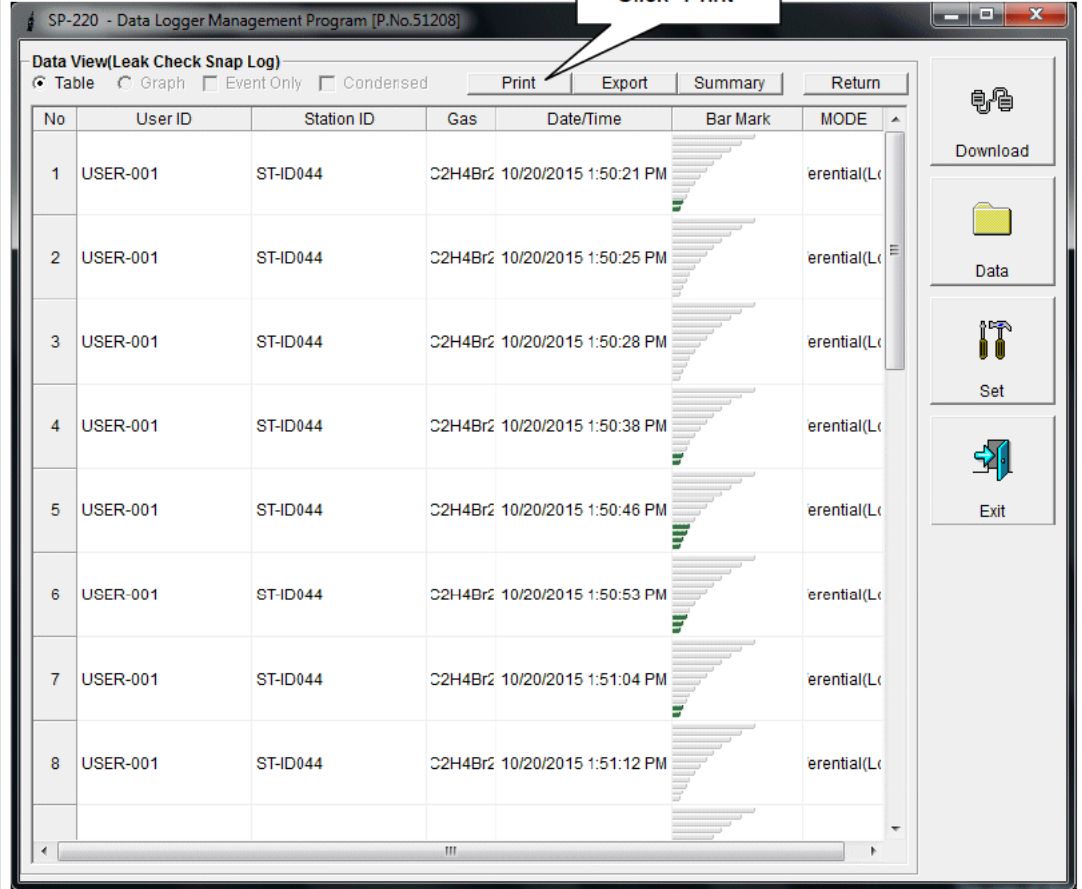
Exit

(2) Output to a printer

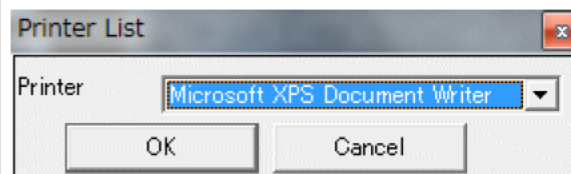
- **Print**

The content currently displayed on the Data View screen can be output to a printer.

1. Click the "Print" button on the screen.



The Printer List screen is displayed. Select the printer to use and click the "OK" button.



Click the "OK" button to start the printout.

Click the "Cancel" button to cancel the printout and return to the previous screen.

Printout example (trouble events)				Printout example (leak check snap log)						
SP-220 Data Logger (Trouble Event) 18/03/19 9:52:15 AM <hr/> Property: _____ Value: _____ Serial No: _____ Station ID: ST-0001 User ID: USRR-001 Last Downloaded: 10/21/2015 11:00:42 AM				SP-220 Data Logger (Leak Check Snap Log) 18/03/19 9:51:27 AM <hr/> Property: _____ Value: _____ Sampling (Month/Year): 10/15 Serial No: _____ Station ID: ST-0044 User ID: USRR-001						
No	DateTime	Gas/Body	Event	No	User ID	Station ID	Gas	Date/Time	Gas/Alert	MODE
1	10/19/2015 4:41:07 PM	Body	Fail(FLOW)	1	USRR-001	ST-0044	C2H4B2	10/20/2015 1:50:21 PM	2	Differential(Low)
2	10/19/2015 4:41:08 PM	Body	Fail(AUX)	2	USRR-001	ST-0044	C2H4B2	10/20/2015 1:50:25 PM	0	Differential(Low)
				3	USRR-001	ST-0044	C2H4B2	10/20/2015 1:50:26 PM	0	Differential(Low)
				4	USRR-001	ST-0044	C2H4B2	10/20/2015 1:50:35 PM	2	Differential(Low)
				5	USRR-001	ST-0044	C2H4B2	10/20/2015 1:50:46 PM	4	Differential(Low)
				6	USRR-001	ST-0044	C2H4B2	10/20/2015 1:50:53 PM	3	Differential(Low)
				7	USRR-001	ST-0044	C2H4B2	10/20/2015 1:51:04 PM	2	Differential(Low)
				8	USRR-001	ST-0044	C2H4B2	10/20/2015 1:51:12 PM	0	Differential(Low)
				9	USRR-001	ST-0044	C2H4B2	10/20/2015 1:51:16 PM	3	Differential(Low)
				10	USRR-001	ST-0044	C2H4B2	10/20/2015 1:51:22 PM	4	Differential(Low)
				11	USRR-001	ST-0044	C2H4B2	10/20/2015 1:52:01 PM	5	Differential(Low)
				12	USRR-001	ST-0044	C2H4B2	10/20/2015 1:52:25 PM	1	Differential(Low)
				13	USRR-001	ST-0044	C2H4B2	10/20/2015 1:52:32 PM	1	Differential(Low)
				14	USRR-001	ST-0044	C2H4B2	10/20/2015 1:52:47 PM	4	Differential(Low)
				15	USRR-001	ST-0044	C2H4B2	10/20/2015 1:52:53 PM	1	Differential(Low)
				16	USRR-001	ST-0044	C2H4B2	10/20/2015 1:53:02 PM	1	Differential(Low)
				17	USRR-001	ST-0044	C2H4B2	10/20/2015 1:53:09 PM	3	Differential(Low)
				18	USRR-001	ST-0044	C2H4B2	10/20/2015 1:53:19 PM	2	Differential(Low)
				19	USRR-001	ST-0044	C2H4B2	10/20/2015 1:53:25 PM	1	Differential(Low)
				20	USRR-001	ST-0044	C2H4B2	10/20/2015 1:53:43 PM	2	Differential(Low)
				21	USRR-001	ST-0044	C2H4B2	10/20/2015 1:53:46 PM	0	Differential(Low)
				22	USRR-001	ST-0044	C2H4B2	10/20/2015 1:53:50 PM	0	Differential(Low)
				23	USRR-001	ST-0044	C2H4B2	10/20/2015 1:53:55 PM	0	Differential(Low)
				24	USRR-001	ST-0044	C2H4B2	10/20/2015 1:53:56 PM	1	Differential(Low)



CAUTION

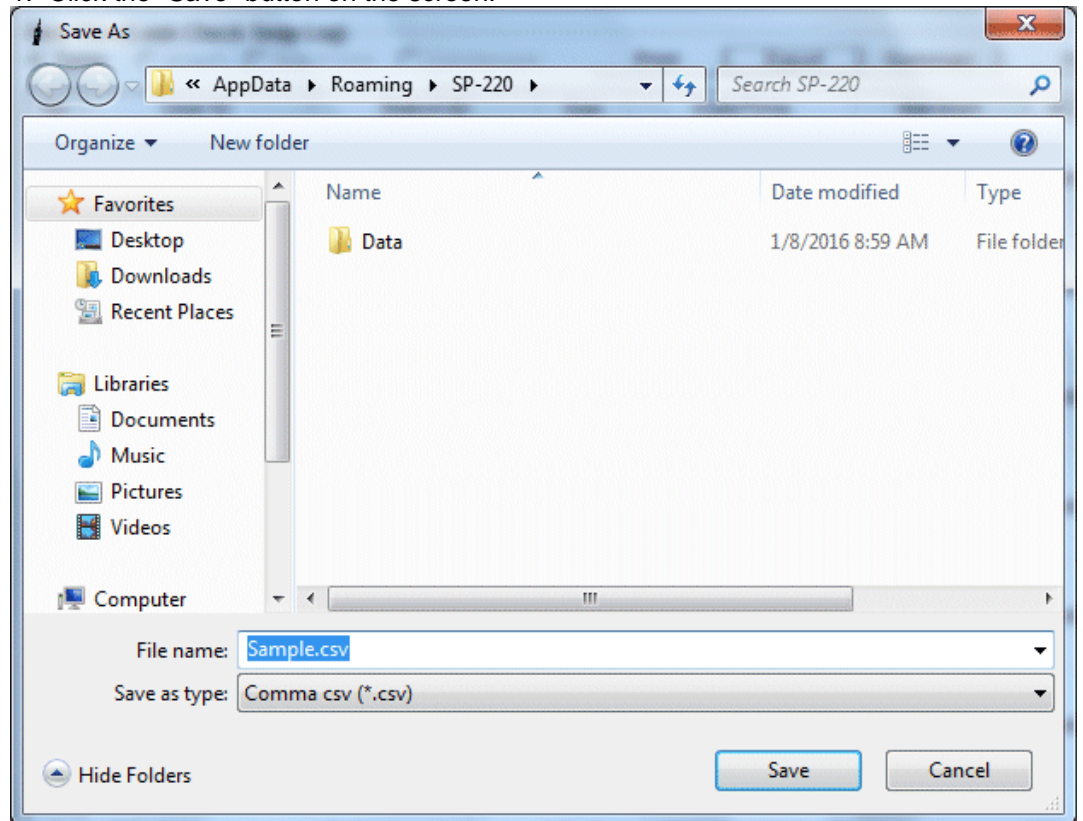
Notes on printer settings

- (1) Detailed printer settings depend on the printer used. Please see the operation manual of the printer.
- (2) This program does not support Print Area setting. Therefore, usage such as printing only part of the selected data is not possible.
- (3) Copies can be changed only when the setting is available from the printer.
 When the setting is changed in this way, the change affects other applications subsequently used.
 (For example, when Copies is changed to 2, a printout operation from another application might also result in two copies.)
 If Print Setting is changed in this program, when a printout is required from another application, check Print Setting of that application.

(3) Save to a file

- **Save**

1. Click the "Save" button on the screen.



Specify the location and the file name, and click the "Save" button to store the data. Click the "Cancel" button to cancel the save operation.



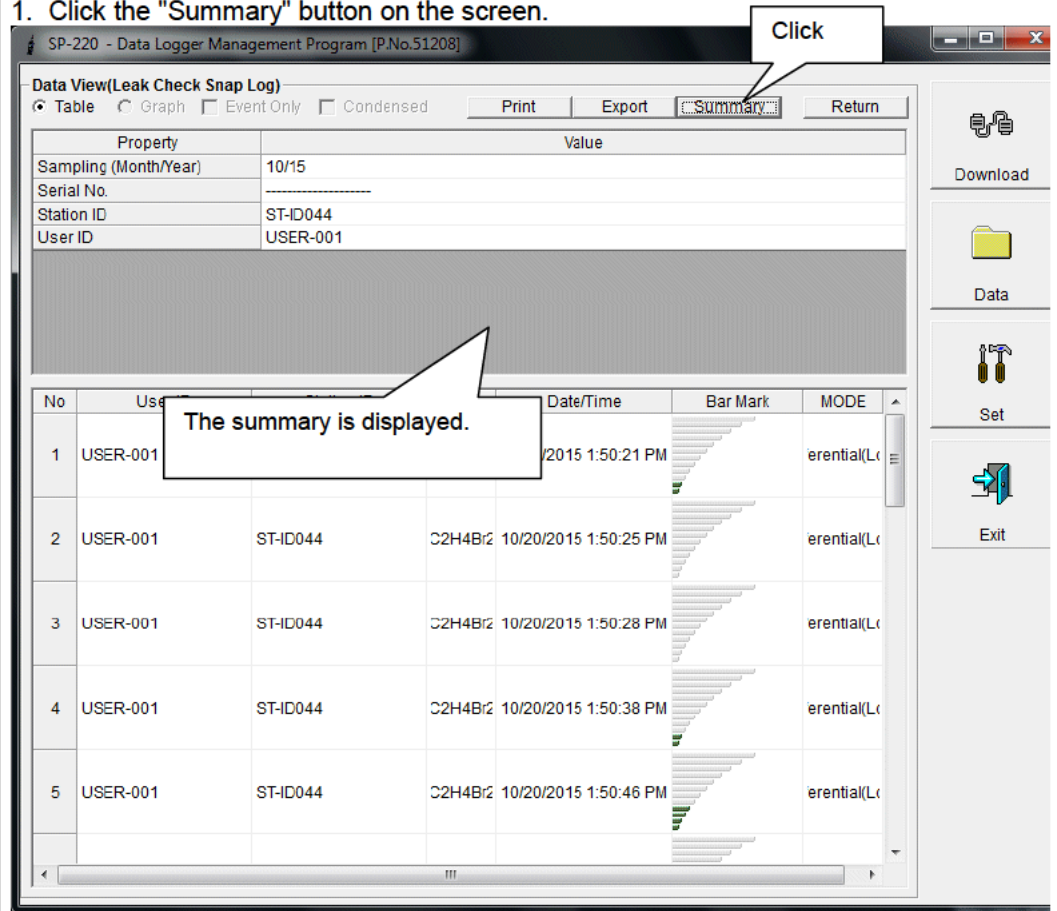
CAUTION

The content of the table is saved in the Excel CSV format.

(4) To view data summary simultaneously

- **Summary view**

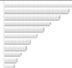






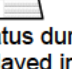


1. Click the "Summary" button on the screen.



When the "Summary" button is clicked, the summary view is cleared.

(5) Table details

- Leak check snap log

No	User ID	Station ID	Gas	Date/Time	Bar Mark	MODE
26	USER-001	ST-ID060	C2H4Br2	10/20/2015 2:06:03 PM		Differential(Low
27	USER-001	ST-ID060	C2H4Br2	10/20/2015 2:06:05 PM		Differential(Low
28	USER-001	ST-ID060	C2H4Br2	10/20/2015 2:06:09 PM		Differential(Low
29	USER-001	ST-ID060	C2H4Br2	10/20/2015 2:06:13 PM		Differential(Low
30	USER-001	ST-ID060	PH3	10/20/2015 3:53:39 PM		Normal
31	USER-001	ST-ID060	PH3	10/20/2015 3:53:44 PM		Normal
32	USER-001	ST-ID060	PH3	10/20/2015 3:53:52 PM		Normal
33	USER-001	ST-ID060	PH3	10/20/2015 3:53:55 PM		Normal
34	USER-001	ST-ID060	PH3	10/20/2015 3:54:06 PM		Normal
35	USER-001	ST-ID060	PH3	10/20/2015 3:54:06 PM		Normal

The bar mark status during recording is displayed in green.

3-4. Set screen

In this screen, display settings of the screen and the detailed settings of the unit can be specified.

SP-220 - Data Logger Management Program [P.No.51208]

Set

FontAnd Color

SP-220 Status

(1) Set font

(2) Edit station/user list

(2) Change status of the main unit

(2) Set time

Click this button

(3) Send updates to the SP-220 main unit

Gas	Warning and Alarm	Auto Cal.(PH3)
PH3	Normal 3	0.10



CAUTION

The data specified and/or changed must be sent to the SP-220 main unit using the "Update" button.



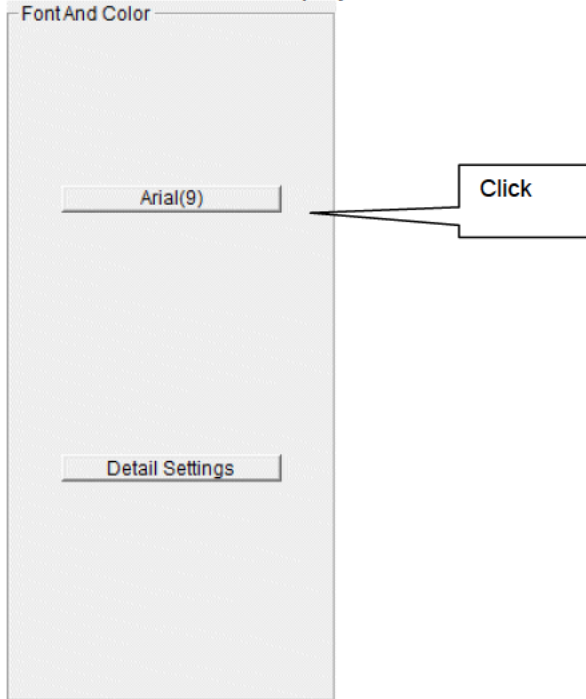
CAUTION

The font setting is applied on the next startup.

(1) Change the font

- **Change the font**

1. Click the area that displays the font.



The font setting dialog is displayed. Specify an appropriate font.

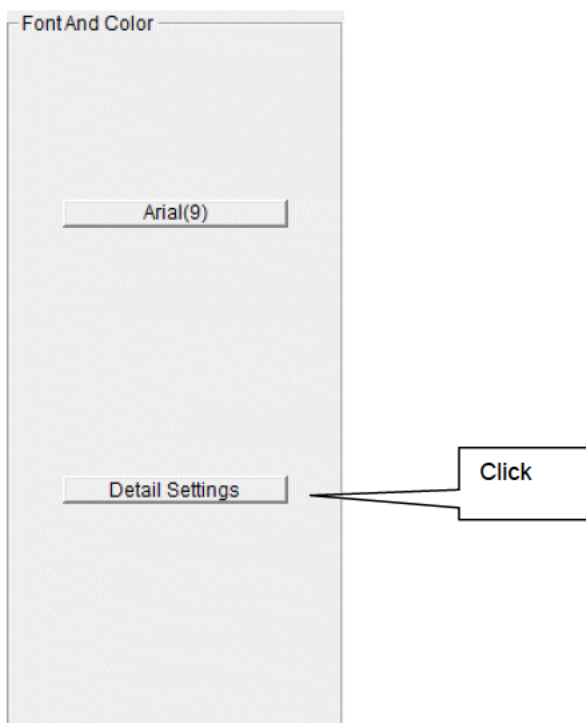


CAUTION

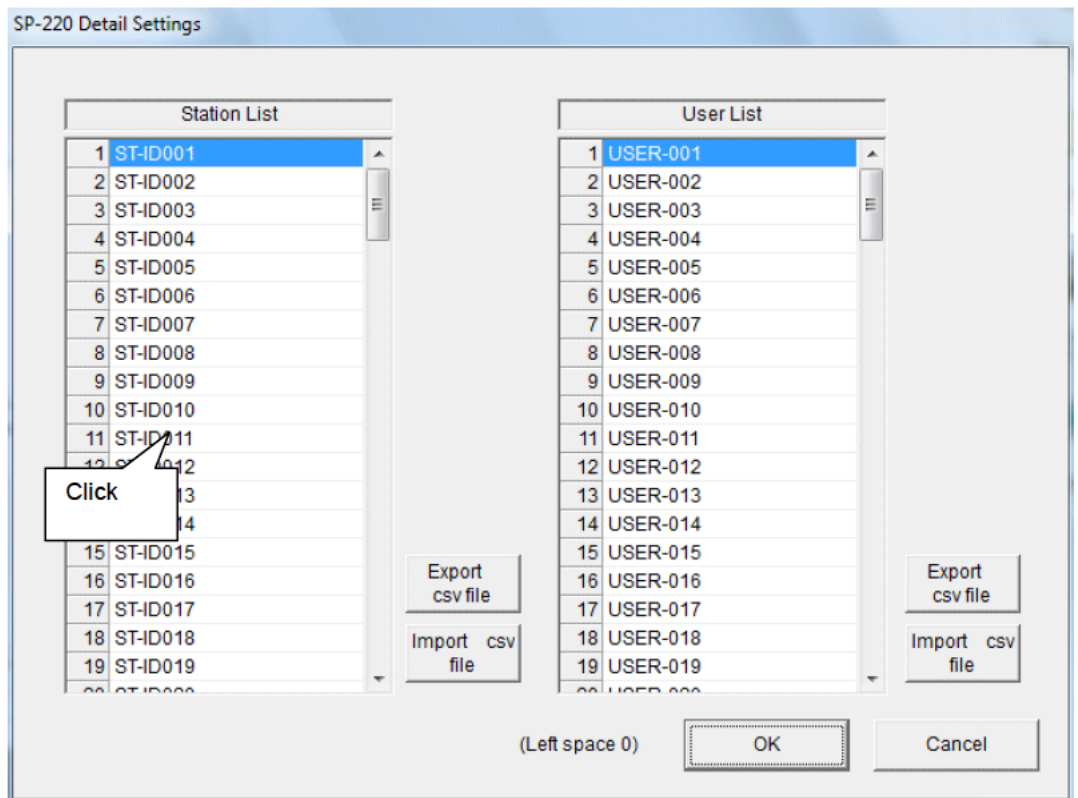
When an extremely large font is used, the screen might be hard to view.
This change will be effective on the next startup.

- **Edit station/user list**

1. Edit the station/user ID list.
Click "Detail Settings".



(2) Change status of the main unit



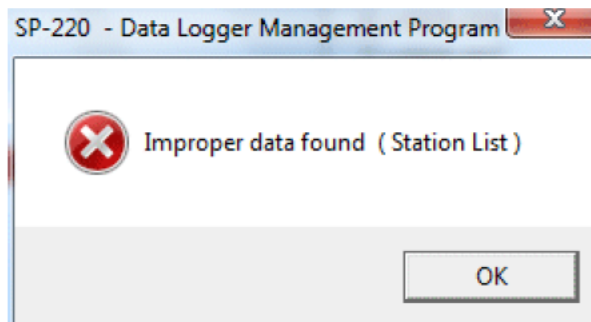
The edit dialog is displayed. The station list contains stations up to Number 128. Up to 16 characters of alphabets, numerics, spaces, hyphens and slashes can be entered.

* In the SP-220 main unit, only the first eight characters are displayed. We recommend to use up to eight characters of only upper-case alphabets and/or numerics.

Export csv file: The data is exported to a file. A text file is created using the "Number,data" format.

Import csv file: Data is loaded from a text file that follows the "Number,data" format. If the data contains unsupported letters, or the data is too long, the background color of the corresponding cells is changed to red.

* If any cells have red background, **OK** cannot be selected.



- **Change**

2. In the status area, change the desired data.

SP-220 Status

Serial No. (20 Characters)	<input type="text"/>
Station ID (16 Characters)	<input type="text" value="ST-ID003"/>
User ID (16 Characters)	<input type="text" value="USER-001"/>
PC Date/Time	<input type="text" value="1/8/2016 9:39:34 AM"/>
SP-220 Date/Time	<input type="text" value="1/8/2016 10:38:07 AM"/>

The contents of Serial No. (20 Characters) can be changed.
Station ID (16 Characters) and User ID (16 Characters) can be selected and changed from the list.
The "Date/Time Set" button can be used to align the internal clock of the SP-220 main unit (SP-220 Date/Time) to the set time of the PC (PC Date/Time).



CAUTION

The date/time areas cannot be entered directly.



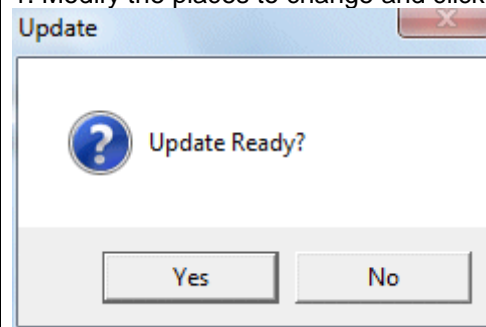
CAUTION

The settings of the SP-220 main unit are not modified except Date/Time Set by this change. Make sure to click "Update" to send the change request process to the main unit.

(3) Send updates to the SP-220 main unit

- **Send updates**

1. Modify the places to change and click the "Update" button.



When the "Yes" button is clicked, the changes are sent to the SP-220 main unit and stored there.

When the "No" button is clicked, update is canceled.



CAUTION

The changes cannot be undone. Before clicking "Update", it is possible to revert to the data stored in the main unit by clicking the "Instrument Information" button on the Download screen to download the instrument information data.

4

Data Maintenance

Depending on usage (such as loading data many times in a single day), the number of data might increase drastically. In such a case, it might be difficult just to find the desired data. In addition, there is a possibility of losing valuable data caused by an unexpected trouble of the PC. To prepare for such unexpected events, a periodical backup of the data is recommended.

4-1. Details of data storage structure

Data is stored in the working folder of the shortcut.

- 1) File name: SP220.mdb
File type: Microsoft Jet 3.6 database file

4-2. Backup

Although it depends on usage, we recommend the data to be copied to another hard disk device or an auxiliary storage device (such as an MO drive or CD-R drive).

To restore data, copy it to the installation folder of the SP-220 executable. The program searches for data on startup and the data will be available to view.

Operating Precautions

When using the program, take sufficient considerations on the following points:

- (1) When downloading data, check that SP-220 is placed at an appropriate position. If the position is not appropriate, download cannot be performed properly.
- (2) When downloading, avoid similar operations using another application. (For example, performing IR communication during data download)
- (3) Do not kill the program (for example, by using Ctrl + Alt + Del). This program saves setting parameters on the shutdown process to prepare for the next startup. Therefore, if the program is killed, the next startup might fail.
- (4) Do not modify a data file directly.

6

Troubleshooting

Symptoms	Causes	Solutions
Communication is not possible.	The position of the main unit is inappropriate. An obstacle is in the way.	Change the position of the main unit.
	There is another device that uses IR.	Turn off the other devices, or prevent its interference.
Error occurs during communication.	There is a scattered light outside.	Eliminate the device that uses IR.
	The SP-220 main unit moved during communication.	Do not move the unit during communication.
Something is wrong in the communication data.	There is a scattered light outside.	Eliminate the device that uses IR.

If an error still persists despite the above actions, please contact RIKEN KEIKI.

7

IrDA Specifications

7-1. About infrared communication

Communication with the main unit is performed via infrared communication (IrDA protocol).

Check that the computer to be used is capable of infrared communication.

Also, place the units so the infrared communication port of the main unit and the communication port of the PC directly face each other, and prevent interference of other lights.



CAUTION

This program can establish communication with the SP-220 main unit only in an environment with IrDA enabled. Check that the PC has a built-in IrDA device, and that it is enabled.

If the computer does not have a built-in IrDA device (this applies to most desktop PC and some notebook PC), use a separately sold IrDA-USB converter.

7-2. Display of communication ready status

At the start of communication, the operating system recognizes existence of an infrared device and displays an icon on the task bar.

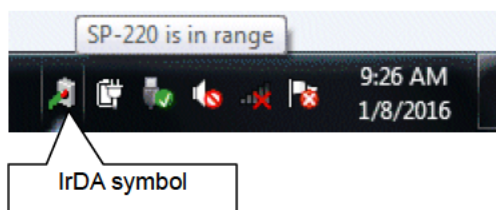
By that icon, the communication status can be understood to some extent.



CAUTION

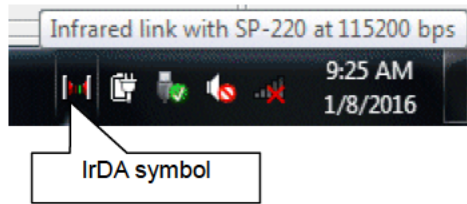
The displayed content might differ depending on the operating system and IrDA driver settings.

7-2-1. Task bar icon when the operating system recognizes SP-220



The IrDA symbol is displayed, and when the cursor is pointed over the symbol, the message "SP-220 is in range" is displayed.

7-2-2. Task bar icon when communication between the data logger program and the SP-220 main unit is in progress



The IrDA symbol changes to an animation icon that shows communication, and when the cursor is pointed over the symbol, the message "Wireless link with SP-220 at xxxx bps" is displayed.

- * "xxxx" shows communication rate, which is normally 115200 bps. Depending on the environment, the rate might drop to a value around 38400 bps.



CAUTION

Due to overhead in internal process of the SP-220 main unit and/or the data logger program, there is little difference in overall communication time if the communication rate is 38400 bps or above. This is because a relatively long time is required to create data within the SP-220 main unit and to analyze the downloaded data by the data logger program.

8

File Structure

This chapter explains the details about file contents at installation and during operation.

8-1. Installation folder

File name	Details
SP220.exe RkIrDA11.ocx Filemove.avi	SP-220 main unit Infrared communication component Animation file that shows that data download is in progress

8-2. Working folder during execution

File name	Details
SP220.ini SP220.dat SP220.mdb Data Serial.log	SP-220 initialization file File for data downloading Database file (Microsoft Jet 3.6 database) Save directory for trend data files Recording of data that flowed through communication port since startup of the program (for investigation and maintenance)



CAUTION

Files are created after startup of the program.

Software Specifications

Name of product (name of program)	SP-220 Data Logger Management Program
Model	SW-SP-220
Executable file name	SP220.EXE
Supported OS	Microsoft Windows 7 Windows 8 Windows 10
Program capacity	Main program: Approx. 3 MB/Library: Approx. 5.2 MB (Uses up to 40 MB of disk space on installation)
Communication of the main unit	Infrared (conforming to IrDA 1.1 protocol) Standard communication settings Baud rate: 115200 bps (maximum) Data bit: 8 bits Stop bit: 1 bit Parity: Even parity
Transfer time	Maximum 3 minutes (standard communication setting, with maximum amount of data)
Medium	One CD-ROM
Package contents	Operating Manual (this document) Product warranty and registration card License agreement